

WIT – Warning for the Integration Team

Clash Publish



REVISED  
09/05/2005

Clash Computation Specification

Products Selected

NSB__0003 BARREL CALORIMETER LAR DRAIN LINE - SIMPLIFIED 3D OBJECT	NSB__0004 LAR BARREL ELECTRONIC CRATES - SIMPLIFIED 3-D OBJECT	-23.53	Not Relevant
NSB__0003 BARREL CALORIMETER LAR DRAIN LINE - SIMPLIFIED 3D OBJECT	NSE__0004 DRAIN PIPE FOR - LAR END-CAP CALORIMETER	-219.57	<i>Solved</i>
NSB__0005 LAR VACUUM FT LINES SIDE C - SIMPLIFIED 3D OBJECTS	NSB__0007 BARREL LAR INSULATION LINE - SIMPLIFIED 3D OBJECT	-5.57	Not Relevant
NSB__0005 LAR VACUUM FT LINES SIDE C - SIMPLIFIED 3D OBJECTS	NSB__0008 BARREL LAR BOTTOM FT VACUUM LINES - SIMPLIFIED 3D OBJECT	-49.57	Not Relevant
NSB__0005 LAR VACUUM FT LINES SIDE C - SIMPLIFIED 3D OBJECTS	NSB__0009 BARREL LAR TOP FT VACUUM LINES - SIMPLIFIED 3D OBJECT	-59.12	<i>Solved</i>
NSB__0006 LAR VACUUM FT LINES SIDE A - SIMPLIFIED 3D OBJECTS	NSB__0007 BARREL LAR INSULATION LINE - SIMPLIFIED 3D OBJECT	-5.57	Not Relevant
NSB__0006 LAR VACUUM FT LINES SIDE A - SIMPLIFIED 3D OBJECTS	NSB__0008 BARREL LAR BOTTOM FT VACUUM LINES - SIMPLIFIED 3D OBJECT	-49.18	Not Relevant
NSB__0006 LAR VACUUM FT LINES SIDE A - SIMPLIFIED 3D OBJECTS	NSB__0009 BARREL LAR TOP FT VACUUM LINES - SIMPLIFIED 3D OBJECT	-58.87	<i>Solved</i>

# Clash Computation Specification

## Products Selected

NSB__0007 BARREL LAR INSULATION LINE - SIMPLIFIED 3D OBJECT	NSB__0008 BARREL LAR BOTTOM FT VACUUM LINES - SIMPLIFIED 3D OBJECT	-186.16	Not Relevant
NSB__0009 BARREL LAR TOP FT VACUUM LINES - SIMPLIFIED 3D OBJECT	NSB__0013 BARREL CALORIMETER SERVICES - IN SECTOR 5 ON SIDE A	-5.59	<i>Solved</i>

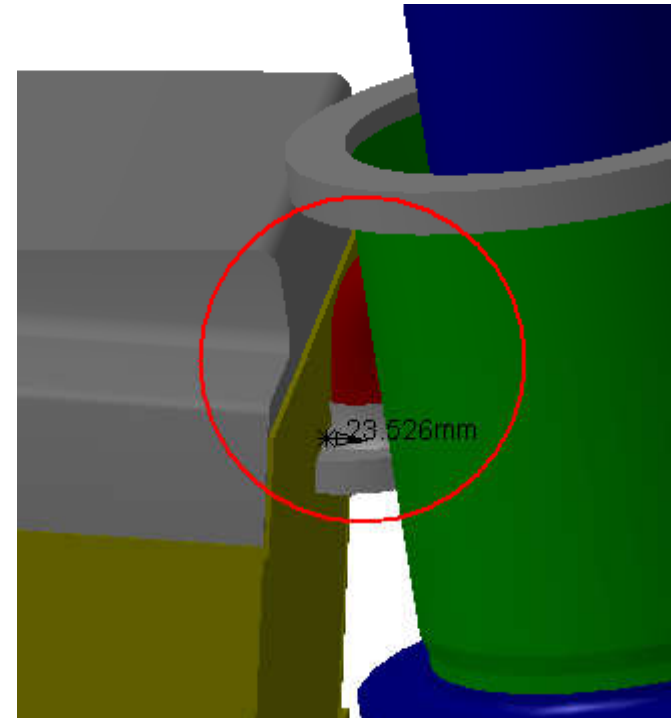
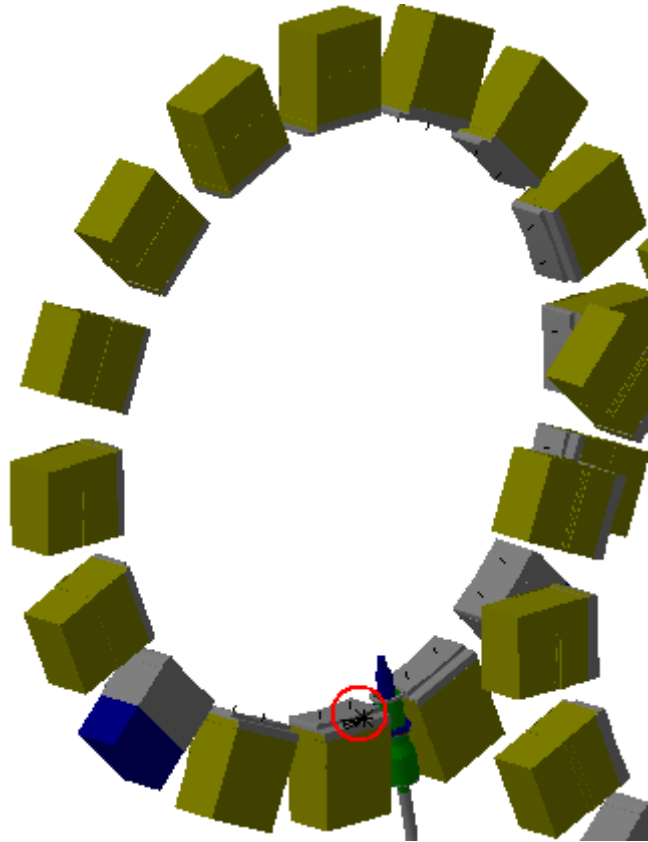


# Clash Publish

Clash Computation Specification	
Products Selected	
NSB_0003 BARREL CALORIMETER LAR DRAIN LINE - SIMPLIFIED 3D OBJECT	NSB_0004 LAR BARREL ELECTRONIC CRATES - SIMPLIFIED 3-D OBJECT

**Computation Result:**

NSB_0003	NSB_0004	Clash	-23.53	Not Relevant
----------	----------	-------	--------	--------------



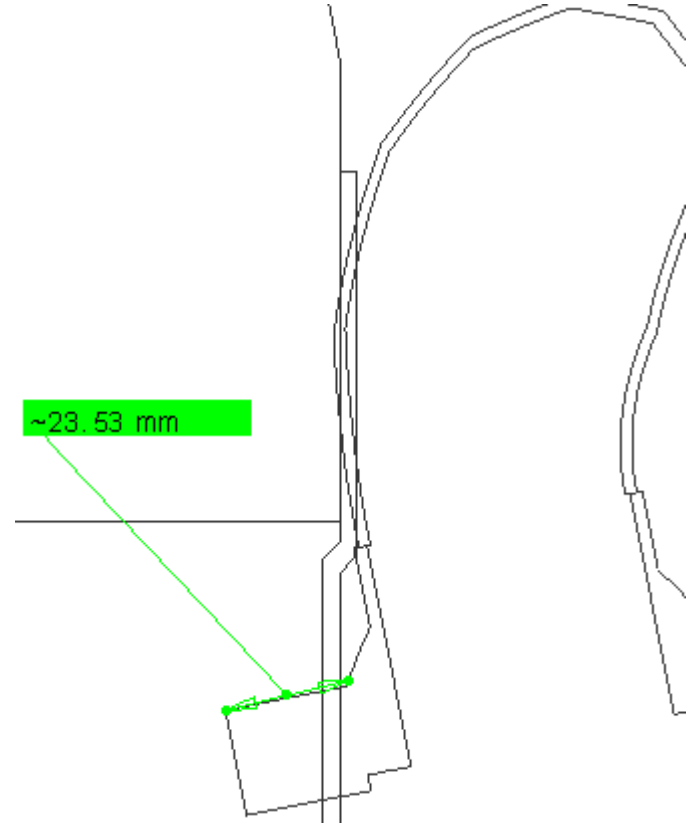
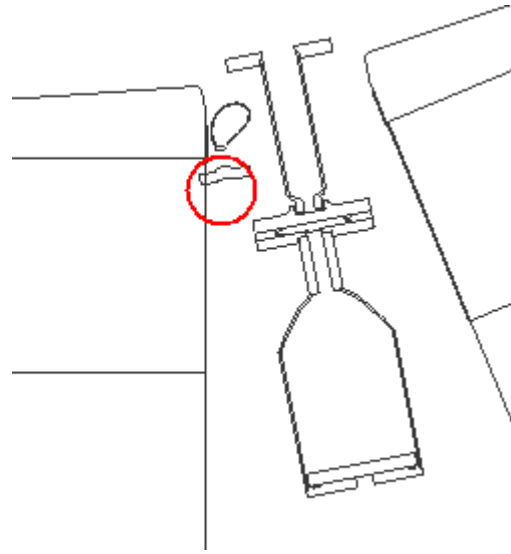
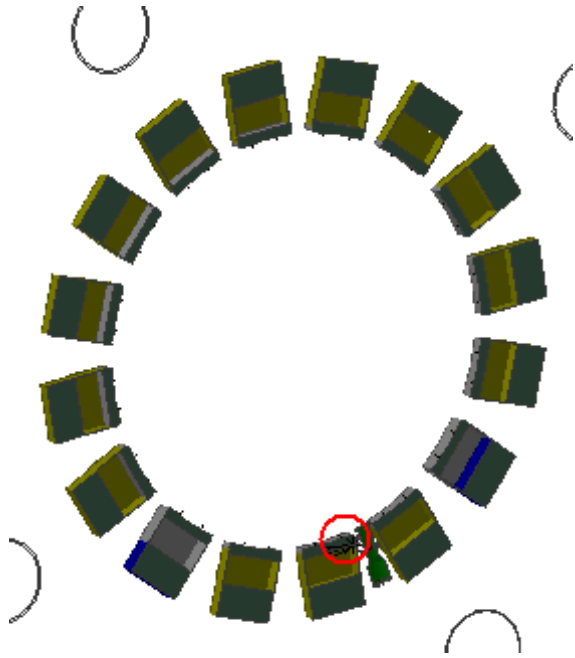
Clash=-23.53

Side A

Sector 13

Peter: Objects are already Installed

# Clash View 1:



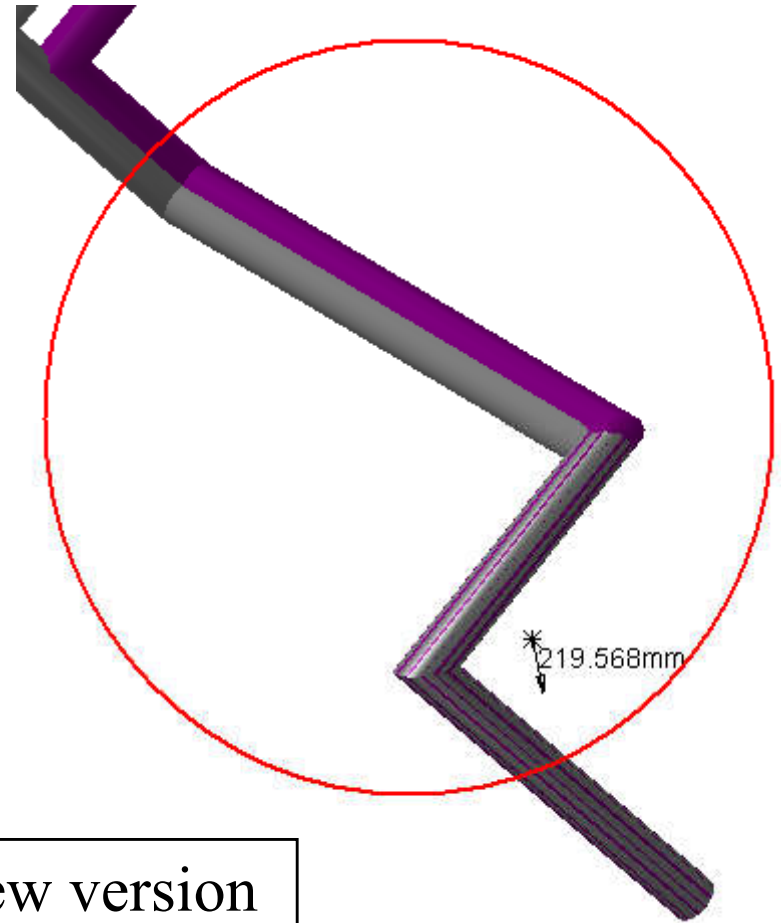
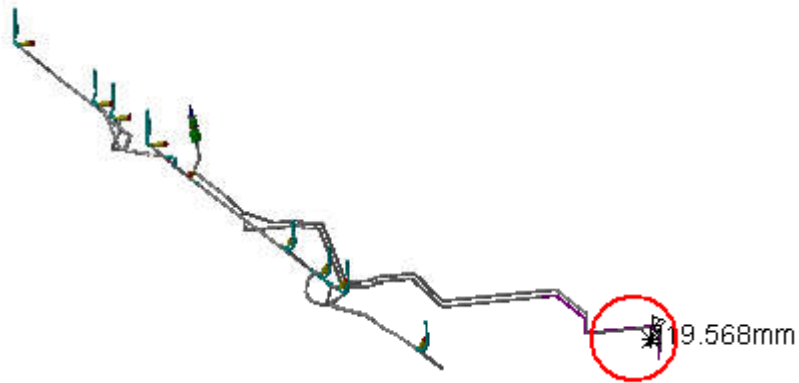


# Clash Publish

Clash Computation Specification	
Products Selected	
NSB_0003 BARREL CALORIMETER LAR DRAIN LINE - SIMPLIFIED 3D OBJECT	NSE_0004 DRAIN PIPE FOR - LAR END-CAP CALORIMETER

**Computation Result:**

NSB_0003	NSE_0004	Clash	-219.57mm	Not Relevant
----------	----------	-------	-----------	--------------



Clash= -219.57mm

Side C

Sector 11

Peter: Working on new version  
of NSB\_0003



# Clash Publish

Clash Computation Specification	
Products Selected	
NSB_0005 LAR VACUUM FT LINES SIDE C - SIMPLIFIED 3D OBJECTS	NSB_0007 BARREL LAR INSULATION LINE - SIMPLIFIED 3D OBJECT

**Computation Result:**



NSB_0005	NSB_0007	Clash	5.57mm	Not Relevant
----------	----------	-------	--------	--------------



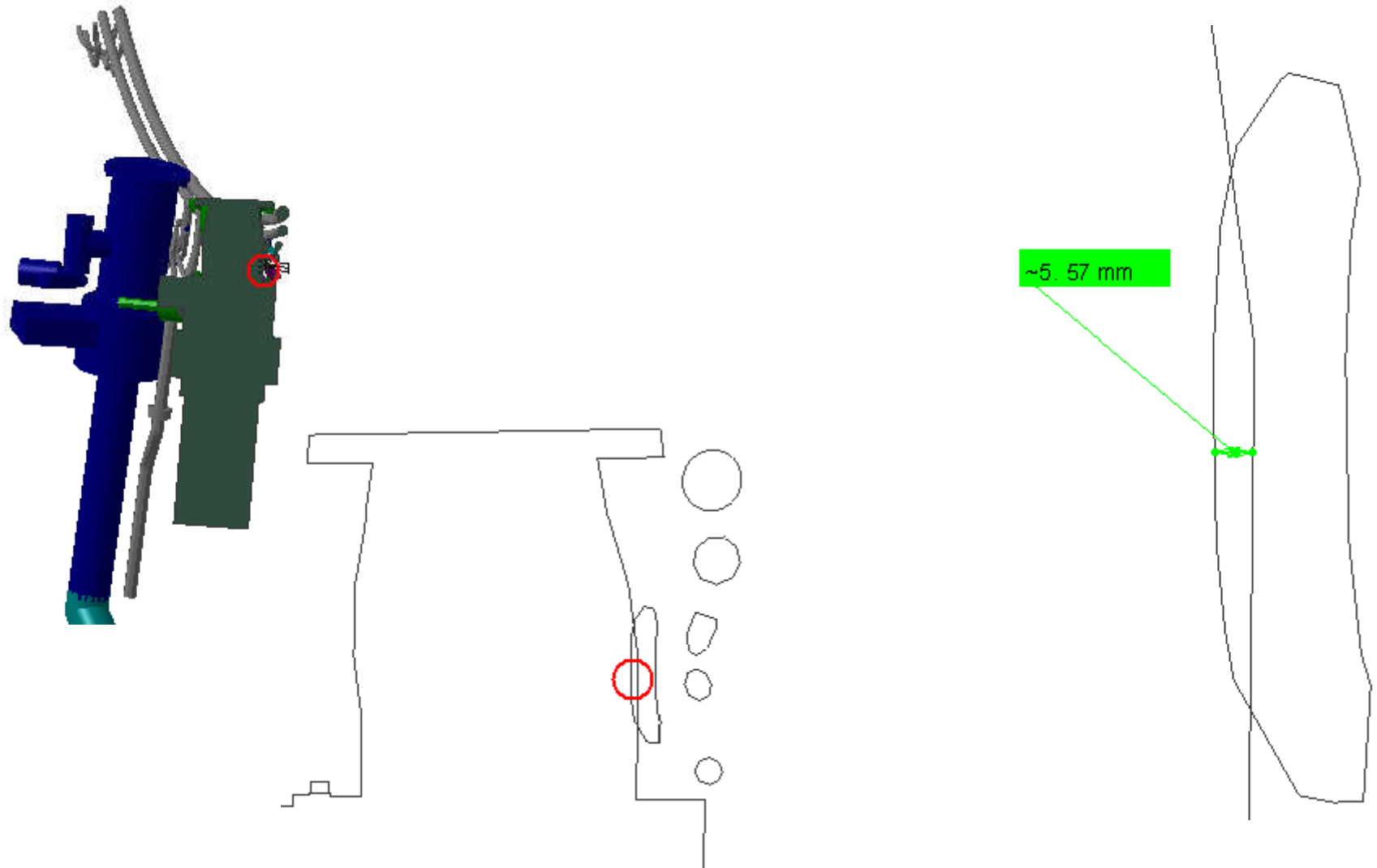
Clash=5.57mm

Side C

Sector 13

Peter: Objects already Installed

# Clash View 1:



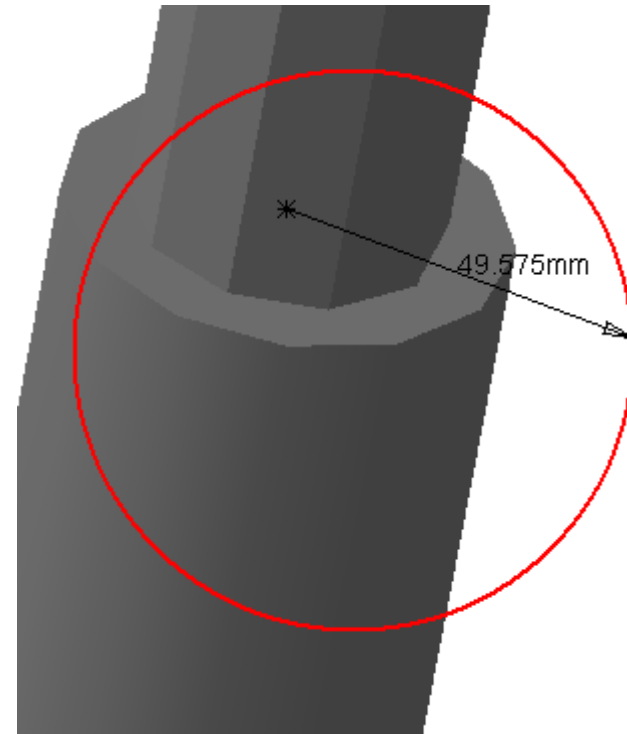
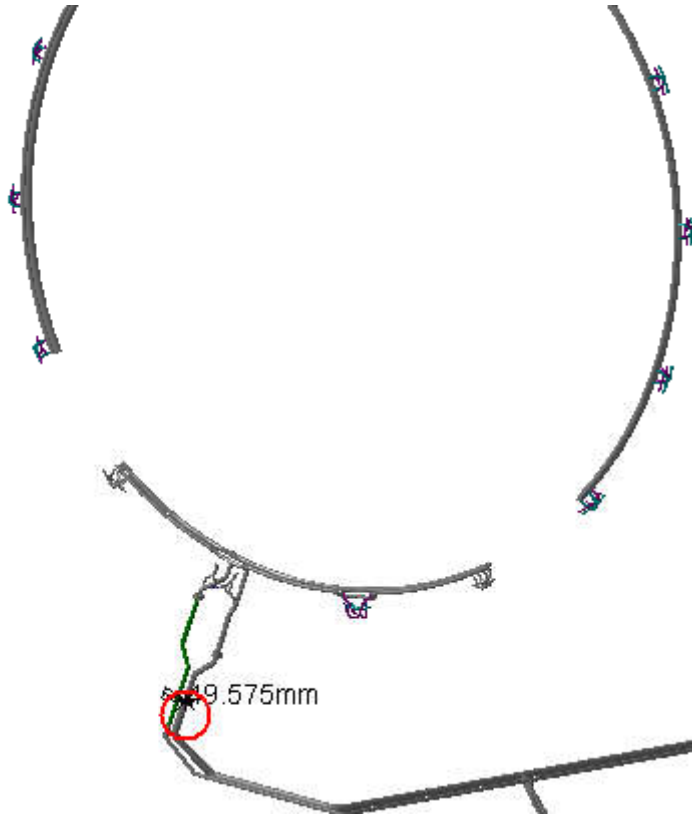


# Clash Publish

Clash Computation Specification	
Products Selected	
NSB_0005 LAR VACUUM FT LINES SIDE C - SIMPLIFIED 3D OBJECTS	NSB_0008 BARREL LAR BOTTOM FT VACUUM LINES - SIMPLIFIED 3D OBJECT

**Computation Result:**

NSB_0005	NSB_0008	Clash	-49.57mm	Not Relevant
----------	----------	-------	----------	--------------



Clash=49.57mm

Side C

Sector 13

This is interface

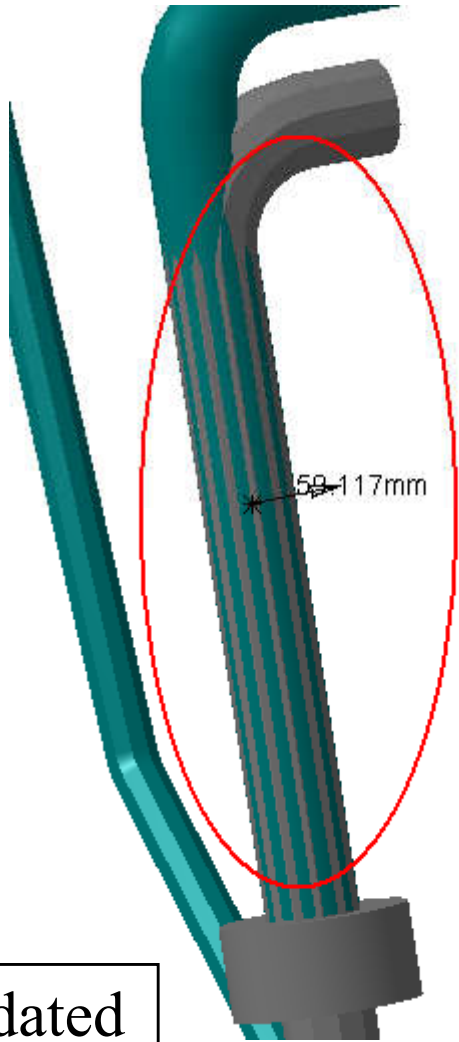


# Clash Publish

Clash Computation Specification	
Products Selected	
NSB__0005 LAR VACUUM FT LINES SIDE C - SIMPLIFIED 3D OBJECTS	NSB__0009 BARREL LAR TOP FT VACUUM LINES - SIMPLIFIED 3D OBJECT

**Computation Result:**

NSB_0005	NSB_0009	Clash	-59.12mm	Relevant
----------	----------	-------	----------	----------



Clash=59.12mm  
Side A  
Sector 5

Peter: NSB\_0005 will be updated

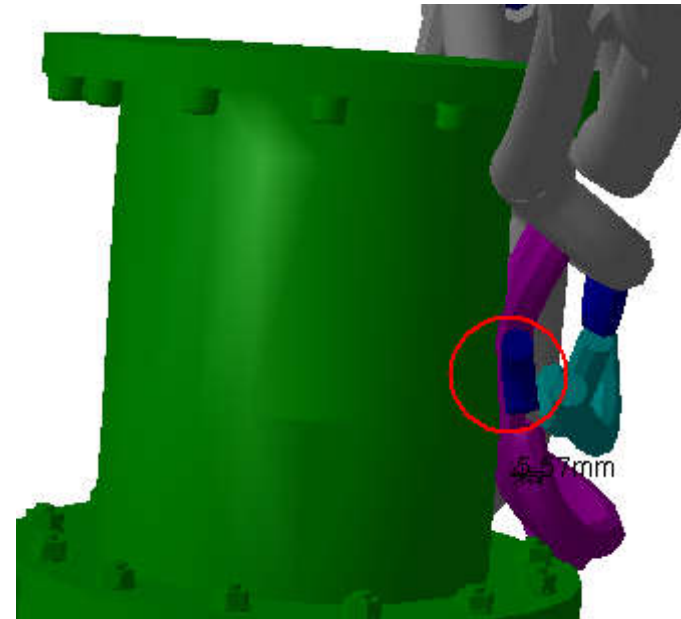


# Clash Publish

Clash Computation Specification	
Products Selected	
NSB__0006 LAR VACUUM FT LINES SIDE A - SIMPLIFIED 3D OBJECTS	NSB__0007 BARREL LAR INSULATION LINE - SIMPLIFIED 3D OBJECT

**Computation Result:**

NSB_0006	NSB_0007	Clash	-5.57mm	Not Relevant
----------	----------	-------	---------	--------------



Clash=5.57mm

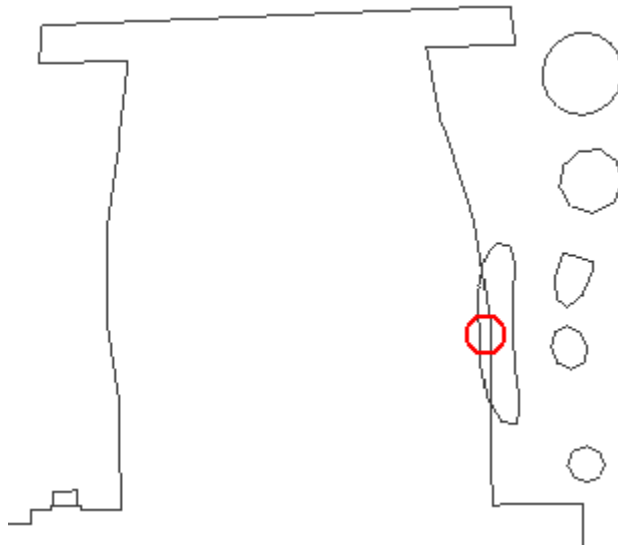
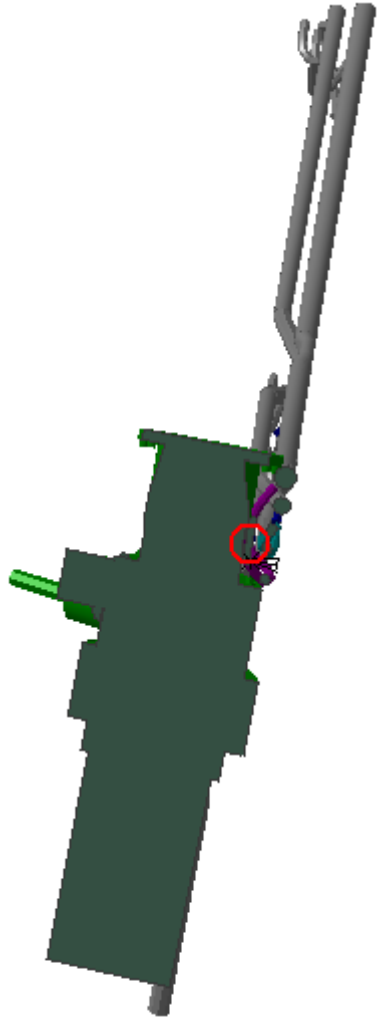
Side A

Sector 13

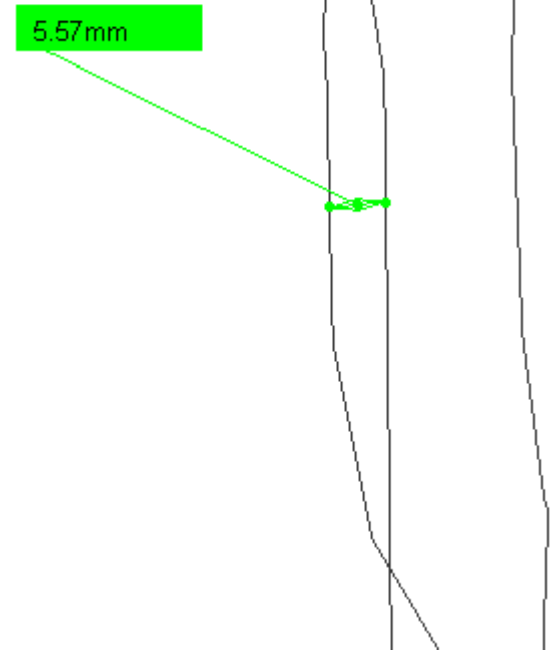
Peter: Objects are already installed



# Clash View 1:



5.57mm



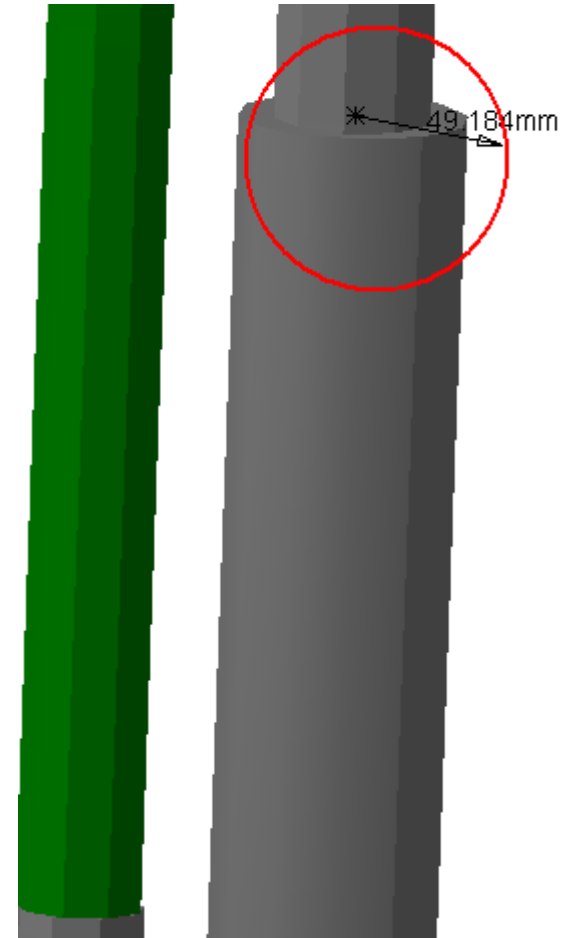
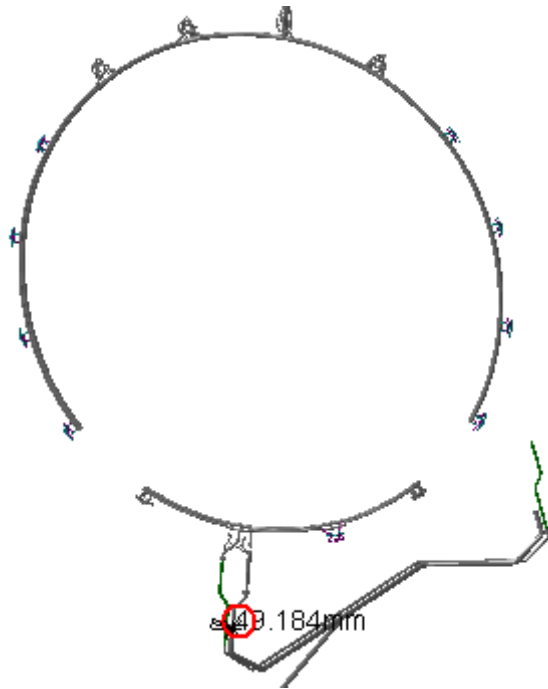


# Clash Publish

Clash Computation Specification	
Products Selected	
NSB_0006 LAR VACUUM FT LINES SIDE A - SIMPLIFIED 3D OBJECTS	NSB_0008 BARREL LAR BOTTOM FT VACUUM LINES - SIMPLIFIED 3D OBJECT

**Computation Result:**

NSB_0006	NSB_0008	Clash	-49.18mm	Not Relevant
----------	----------	-------	----------	--------------



Clash=49.18mm

Side A

Sector 13

This is Interface



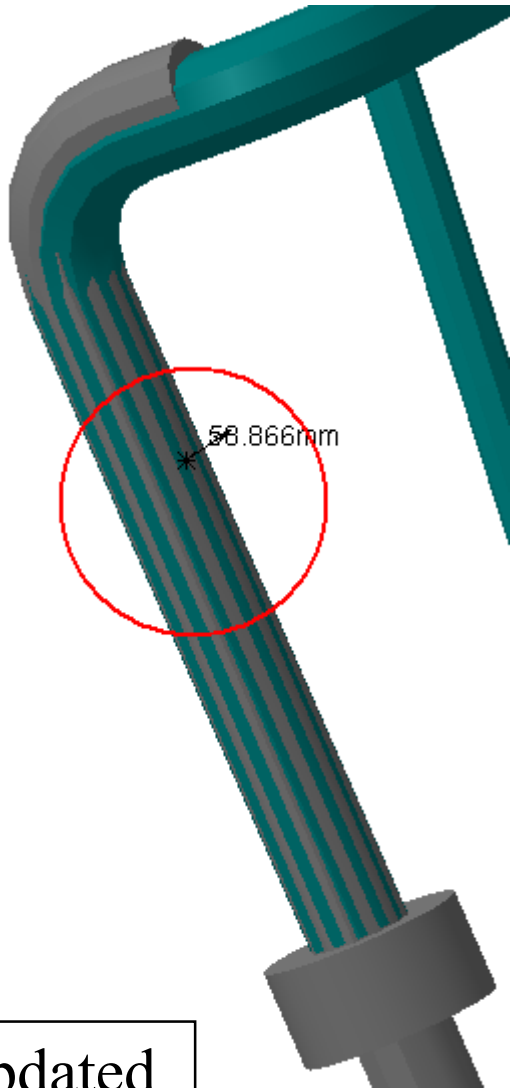
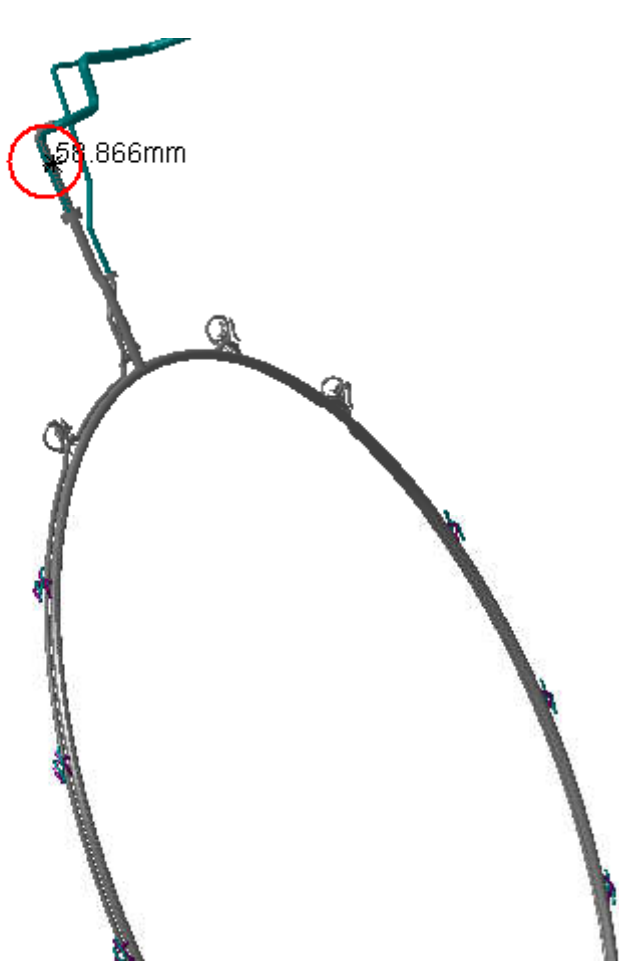
# Clash Publish

Clash Computation Specification	
Products Selected	
NSB__0006 LAR VACUUM FT LINES SIDE A - SIMPLIFIED 3D OBJECTS	NSB__0009 BARREL LAR TOP FT VACUUM LINES - SIMPLIFIED 3D OBJECT

**Computation Result:**

RELEVANT

NSB_0006	NSB_0009	Clash	-58.87mm	Relevant
----------	----------	-------	----------	----------



Clash=-58.87mm

Side A

Sector 5

Peter: NSB\_0006 has to be updated

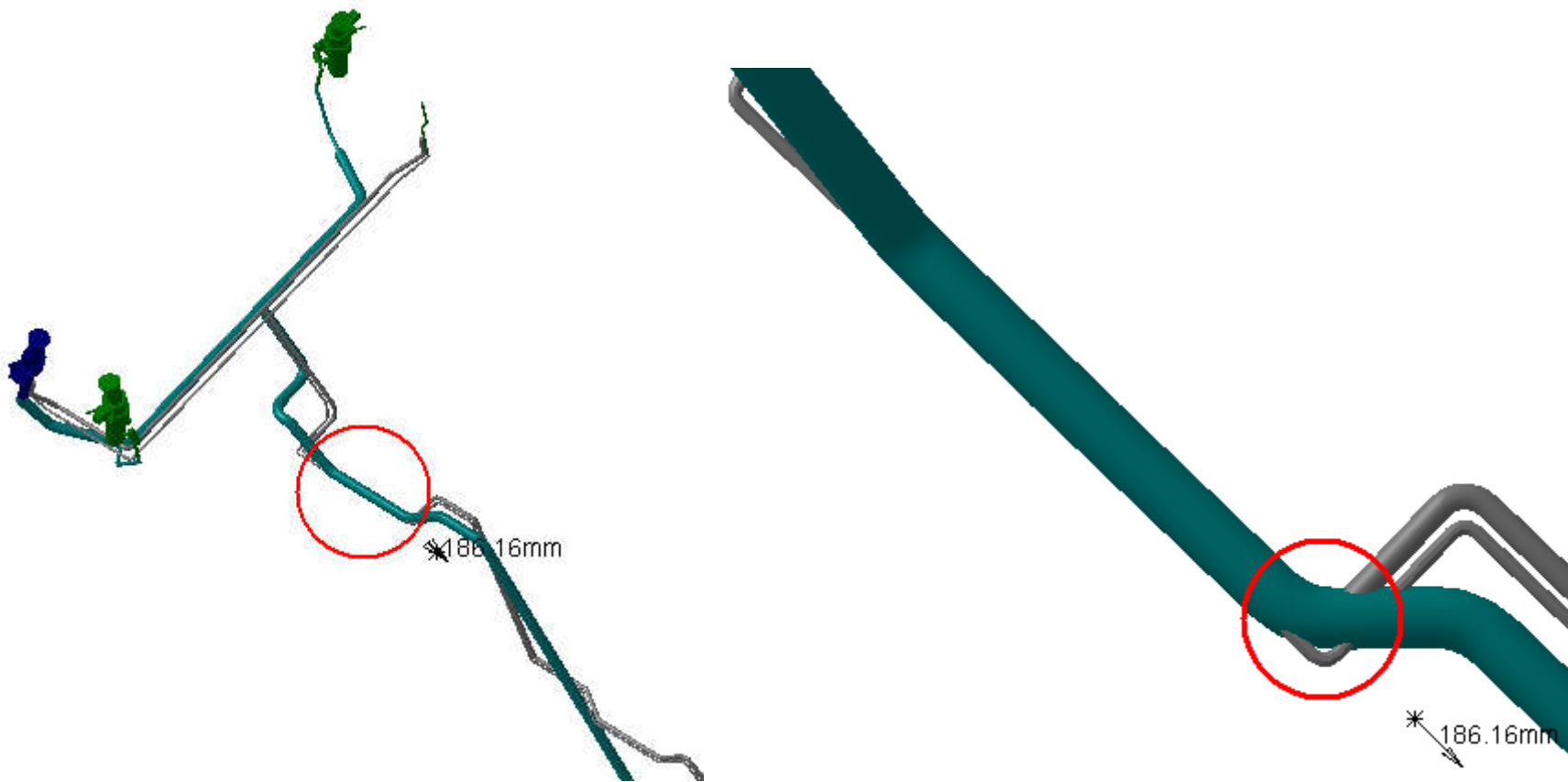


# Clash Publish

Clash Computation Specification	
Products Selected	
NSB_0007 BARREL LAR INSULATION LINE - SIMPLIFIED 3D OBJECT	NSB_0008 BARREL LAR BOTTOM FT VACUUM LINES - SIMPLIFIED 3D OBJECT

**Computation Result:**

NSB_0007	NSB_0008	Clash	-186.16mm	Not Relevant
----------	----------	-------	-----------	--------------



Clash=-186.16mm

Side C

Sector 11

Peter: Model is old, has to be updated



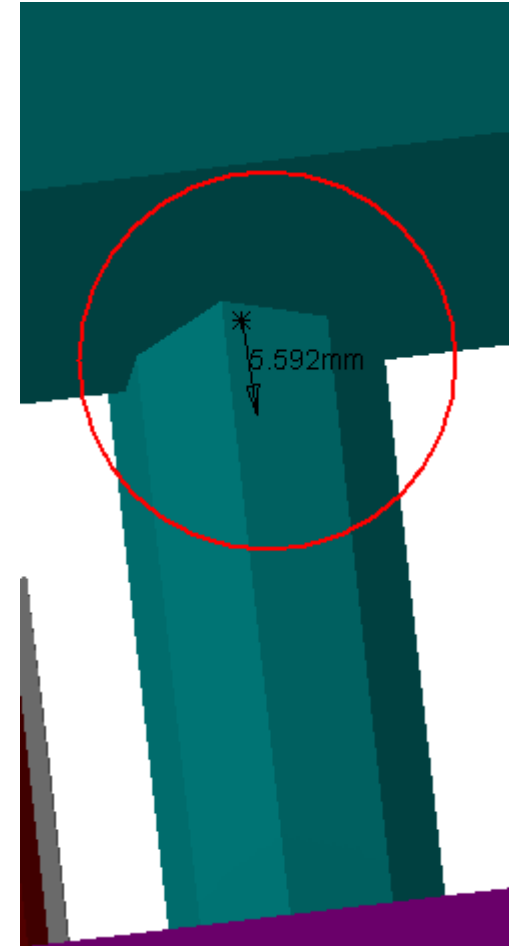
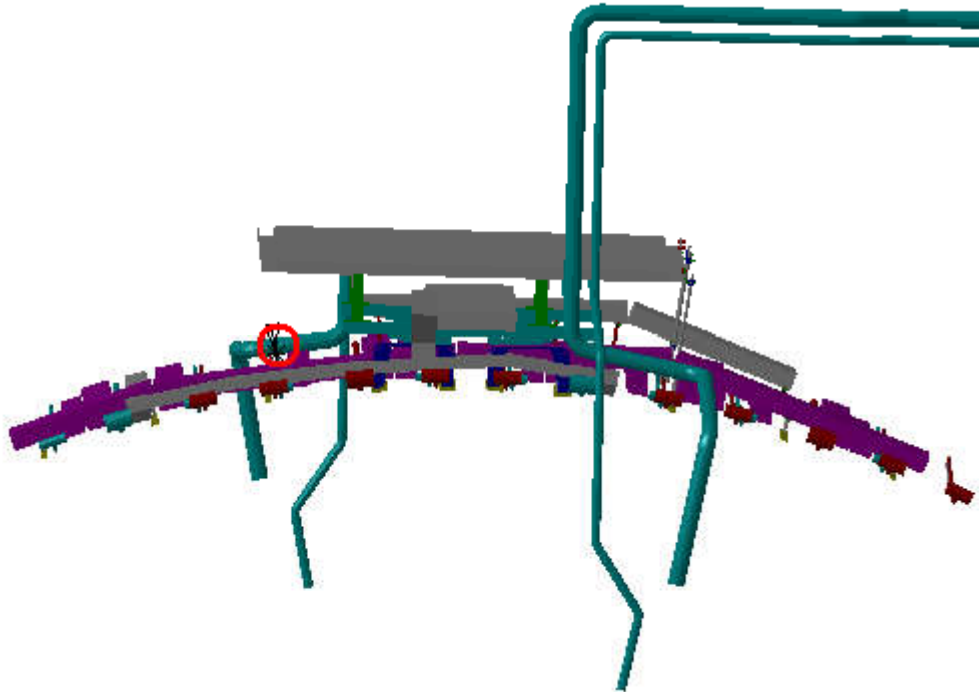
# Clash Publish

Clash Computation Specification	
Products Selected	
NSB__0009 BARREL LAR TOP FT VACUUM LINES - SIMPLIFIED 3D OBJECT	NSB__0013 BARREL CALORIMETER SERVICES - IN SECTOR 5 ON SIDE A

**Computation Result:**



NSB_0009	NSB_0013	Clash	-5.59mm	Relevant
----------	----------	-------	---------	----------



Clash=-5.59mm

Side A

Sector 5

Peter: Pipes in NSB\_0013 will be shorten